

Newly Refurbished

Air Conditioned Offices

Available from 2,093 sq ft to 8,485 sq ft

200 Union St.
London SE1

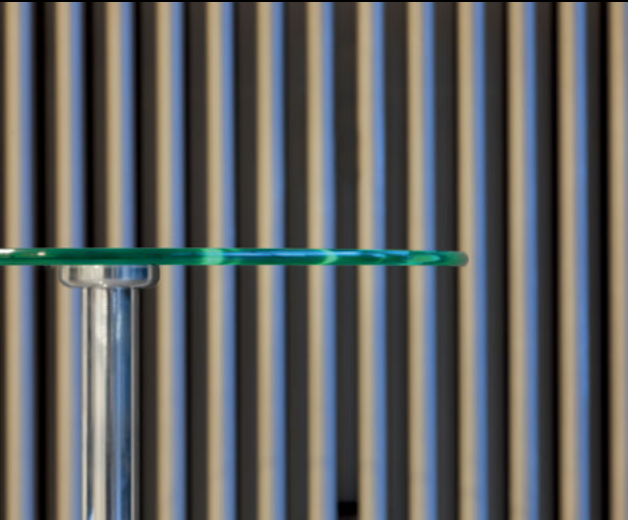


200 Union St.



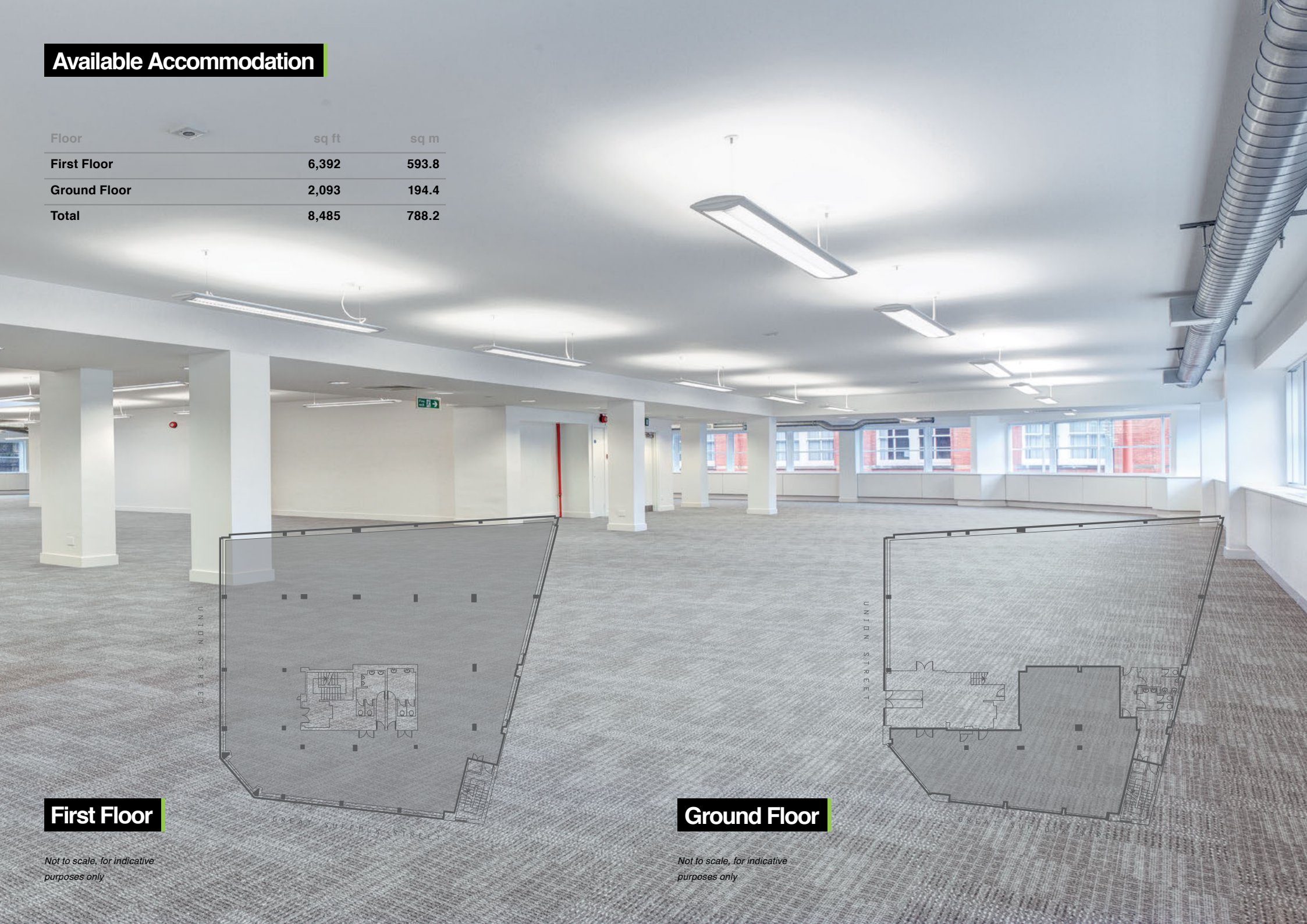
Specification

- Comprehensively refurbished
- New VRF air conditioning (exposed services)
- Plaster ceiling with new suspended LG7 sympathetic lighting
- Refurbished male and female WCs
- 13 person passenger lift
- Bicycle storage
- 24 hour access
- Excellent natural light
- Perimeter trunking
- Window frontage on ground floor
- Car parking available



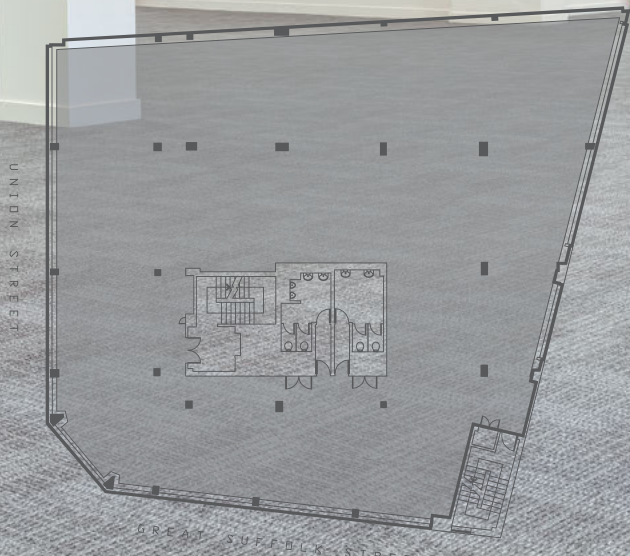
Available Accommodation

Floor	sq ft	sq m
First Floor	6,392	593.8
Ground Floor	2,093	194.4
Total	8,485	788.2



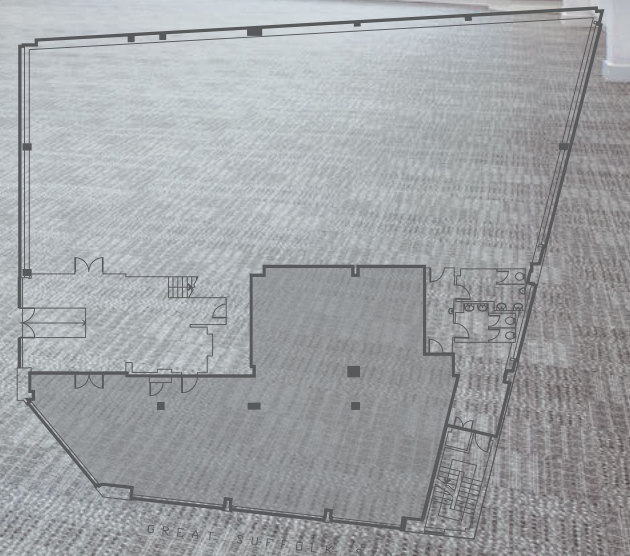
First Floor

Not to scale, for indicative purposes only



Ground Floor

Not to scale, for indicative purposes only



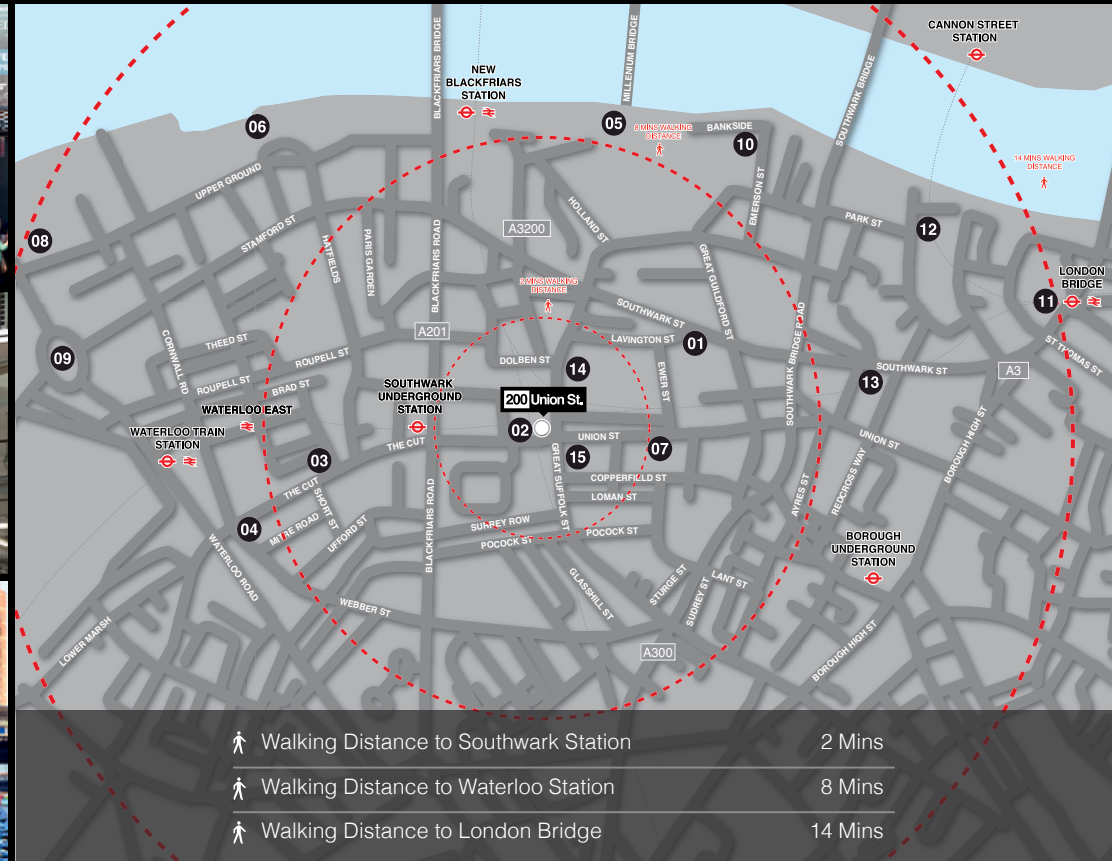
Location

200 Union Street is conveniently located within a two minute walk of Southwark Station (Jubilee Line) and easy walking distance of Waterloo and London Bridge stations. This vibrant location offers plentiful local attractions and amenities including theatres, restaurants, bars and cafes.

Terms

On application

- | | | |
|------------------------|---------------------------------|-------------------------------------|
| 1. Citizen M Hotel | 6. OXO Tower | 11. Borough Market |
| 2. The Union Theatre | 7. Jerwood Space | 12. Vinopolis |
| 3. Young Vic Theatre | 8. National Theatre | 13. Menier Chocolate Factory |
| 4. The Old Vic Theatre | 9. The BFI IMAX | 14. Fitness 4 Less |
| 5. Tate Modern | 10. Shakespeare's Globe Theatre | 15. Gordon Ramsay Opening Late 2013 |



Viewings by appointment strictly through joint sole agents

www.200unionstreet.com



Veronika Sillitoe

020 7029 3619

v.sillitoe@inglebytrice.co.uk

Malcolm Trice

020 7029 3610

m.trice@inglebytrice.co.uk



Simon Smith

020 7420 3015

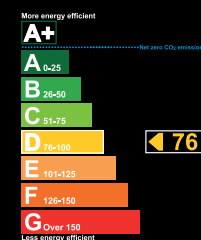
simon.smith@cbre.com

Rupert Cowling

020 7420 3062

rupert.cowling@cbre.com

EPC



Misrepresentation Act 1967: Ingleby Trice & CBRE for themselves and for the vendor(s) or lessor(s) of this property whose agents they are, give notice that: 1. These particulars do not constitute, nor constitute any part of, an offer or contract. 2. None of the statements contained in these particulars as to the property are to be relied on as statements or representations of fact. 3. Any intending purchaser or lessee must satisfy himself by inspection or otherwise as to the correctness of each of the statements contained in these particulars. 4. The vendor(s) or lessor(s) do not make or give Ingleby Trice & CBRE nor any person in their employment has any authority to make or give, any representation or warranty whatever in relation to this property. Finance Act 1989: Unless otherwise stated all prices and rents are quote exclusive of VAT. Property Misdescriptions Act 1991: These details are believed to be correct at the time of compilation but may be subject to subsequent amendment. February 2013.